



TRITON
WPC Decking

www.stormbuildingproducts.com

STORM[®]
BUILDING WITH PLASTIC

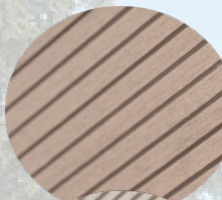
WPC DECKING

A revolutionary decking with a unique composition to replicate wood without the maintenance and hazards, of the traditional timber deck.

IDEAL FOR

- Commercial and residential
- Refurbishing/renovation schemes
- Schools
- Public spaces
- Lodge and residential homes
- Garden office and buildings

Brown



Light Grey



Teak



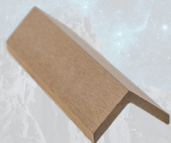
Black



Mid Grey



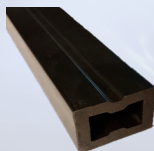
ACCESSORIES



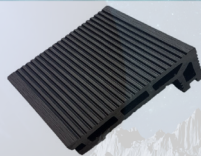
Angle Trim



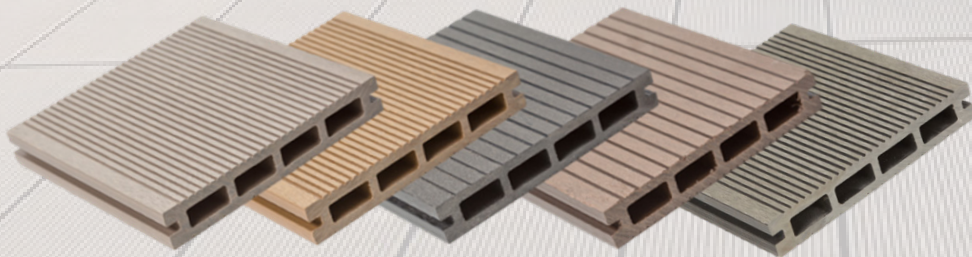
Fixing Clip



Subframe



Step Board



FEATURES

- Decking plank boards available in 3 and 6 metre lengths
- 4 colours available with 2 different design options
- Unique step board available in 6m lengths
- Angle trim available in all 4 colours
- Virtually maintenance free
- Easy to install
- Does not splinter, rot or warp
- Does not host algae growth
- UV weather stable properties
- Anti-slip
- Range of matching accessories

Product Name	Code	Size	Colour
WPC SST Decking	WPCSST30-BK	140mm x 2950mm x 23mm	Black
WPC SST Decking	WPCSST30-BN	140mm x 2950mm x 23mm	Brown
WPC SST Decking	WPCSST30-LG	140mm x 2950mm x 23mm	Light Grey
WPC SST Decking	WPCSST30-TK	140mm x 2950mm x 23mm	Teak
WPC SST Decking	WPCSST59-MG	140mm x 2950mm x 23mm	Mid Grey
WPC SST Decking	WPCSST59-BK	140mm x 5900mm x 23mm	Black
WPC SST Decking	WPCSST59-BN	140mm x 5900mm x 23mm	Brown
WPC SST Decking	WPCSST59-LG	140mm x 5900mm x 23mm	Light Grey
WPC SST Decking	WPCSST59-TK	140mm x 5900mm x 23mm	Teak
WPC SST Decking	WPCSST59-MG	140mm x 5900mm x 23mm	Mid Grey

Product Name	Code	Size	Colour
WPC SST Angle Trim	WPCSST30-AT-BK	40mm x 40mm x 2950mm	Black
WPC SST Angle Trim	WPCSST30-AT-BN	40mm x 40mm x 2950mm	Brown
WPC SST Angle Trim	WPCSST30-AT-LG	40mm x 40mm x 2950mm	Light Grey
WPC SST Angle Trim	WPCSST30-AT-TK	40mm x 40mm x 2950mm	Teak
WPC SST Angle Trim	WPCSST59-AT-LG	40mm x 40mm x 2950mm	Light Grey
WPC SST Angle Trim	WPCSST59-AT-BK	40mm x 40mm x 5900mm	Black
WPC SST Angle Trim	WPCSST59-AT-BN	40mm x 40mm x 5900mm	Brown
WPC SST Angle Trim	WPCSST59-AT-LG	40mm x 40mm x 5900mm	Light Grey
WPC SST Angle Trim	WPCSST59-AT-TK	40mm x 40mm x 5900mm	Teak
WPC SST Angle Trim	WPCSST59-AT-LG	40mm x 40mm x 5900mm	Light Grey

Product Name	Code	Size	Colour
WPC SST Subframe	WPCSST-SUB	40mm x 30mm x 5900mm	Black

Product Name	Code	Size	Colour
WPC SST Fixing Clip	WPCSST-CLIP	N/A	S/S/PVC

Product Name	Code	Size	Colour
WPC SST Step Board	WPCSST-30-SP-BK	116mm x 2950mm x 24mm	Black
WPC SST Step Board	WPCSST-30-SP-BN	116mm x 2950mm x 24mm	Brown
WPC SST Step Board	WPCSST-30-SP-LG	116mm x 2950mm x 24mm	Light Grey
WPC SST Step Board	WPCSST-30-SP-TK	116mm x 2950mm x 24mm	Teak
WPC SST Step Board	WPCSST-30-SP-LG	116mm X 2950mm x 24mm	Light Grey

ANCIENT WAVE DECKING

Ancient Wave is a deep embossed WPC decking product with natural and beautiful textures.

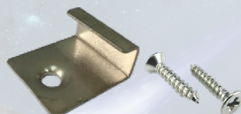
FEATURES

- 2 tone colour for more realistic woodgrain finish, giving the effect of rustic timber with benefits of WPC
- Virtually maintenance free
- Easy to install
- Does not splinter, rot or warp
- Does not host algae growth
- UV weather stable properties
- Anti-slip
- Range of matching accessories

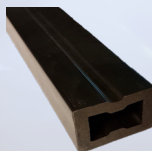
ANCIENT WAVE ACCESSORIES



Angle Trim



Starter Clip



Subframe



Intermediate Clip

Signature
Product

Product Name	Code	Size	Colour
WPC HWD Decking	WPCHDW5-RT2	150mmx x 5000mm x 25mm	Rustic Teak
Product Name	Code	Size	Colour
WPC HWD Angle Trim	WPCSST59-AT-BK	40mm x 40mm x 5900mm	Brown
Product Name	Code	Size	Colour
WPC HWD Subframe	WPCSST-SUB	40mm x 30mm x 5900mm	Black
Product Name	Code	Size	Colour
WPC HWD Starter Clip	WPCHWD-STCLI	N/A	S/S
Product Name	Code	Size	Colour
WPC HWD Intermediate Clip	WPCHWD-IMCLI	N/A	S/S

Ancient
Wave



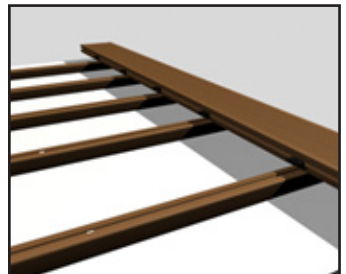
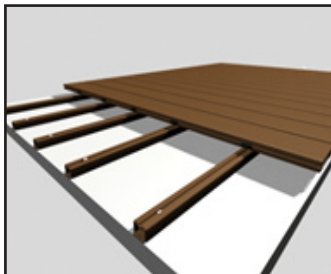
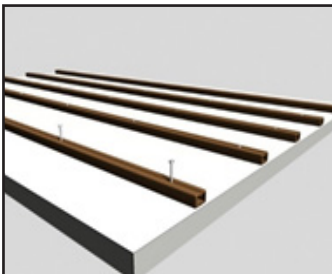
IMPORTANT INSTALLATION NOTES

- Slight colour and surface differences may occur due to slight differences in raw materials or surface treatment. Decking products will fade slightly.
- It is advisable to place the decking sections in the required installation site for 72 hours before you start the installation for them to acclimatize. The decking should not be installed in temperatures below 0°.
- We advise you to use original accessories and parts from Southgate Plastics Ltd.
- There must be a space of at least 25mm between the ground and the subframe. In case of insufficient ventilation any guarantee will be invalidated. There should not be direct contact between the decking structure and the ground (grass, soil etc).
- Variations in temperature and moisture uptake will result in expansion (about 0.3% to 0.5%) of the sufficient distance expansion between the terrace sections.
- A strong and compacted base such as concrete is recommended.
- WPC products are not suitable for closed and wet spaces without air ventilation and/or environment with significant difference temperature change (e.g. sauna room).

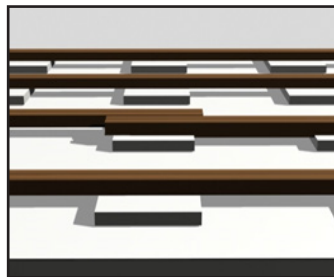
INSTALLATION

Prepare the substructure

- Ensure there is good drainage below the deck area.
- Lay the sub frame with a slight gradient of 1% to 1.5% away from the walls, laid lengthways. Keep the sub frame set of any surrounding walls or other obstacles to allow for slight expansion.
- Keep the sub structure at a maximum of 400mm centres.
- The substructure should be fixed with expansion screws to the concrete at a distance of 300 - 400mm.



- If the support joists are required to be longer than 5m, they should overlap by a minimum of 100mm.
- If the deck boards have to be joined on the length, a second section of joists should be added.

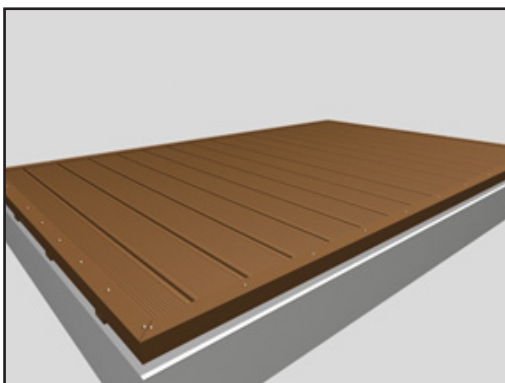
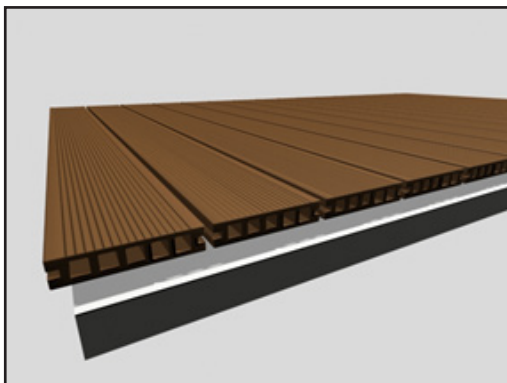


FINISHING

- Fix the L-shape corner cover against the wall and not to the terrace sections to allow for movement of the WPC.

To determine the right positions on the wall, proceed as follows:

- Lay the L-shape cover corner on the terrace sections. Put a mark on the wall at the top edge of the L-shape corner cover.
- Remove the terrace sections from under the L-shape corner cover and fix the L-shape corner cover against the wall
- Always ensure that there is sufficient space of at least 20mm between the L-shape corner cover and the terrace section.
- There must be a gap at the joint between the two corner covers, calculated based on the expansion rate 0.3% - 0.5% of the length.
- The distance between the fixing screws have to be a maximum of 300mm.



IMPORTANT NOTICE

Data contained in this document is for information only and is believed to be reliable. Southgate Plastics cannot assume responsibility for results obtained by others over whose methods we have no control. It is the user's responsibility to determine suitability of the product for any specific purpose and we are pleased to provide a sample upon request.

Marketing Material

For samples and leaflets, please email
marketing@southgateplastics.com or phone 01278 455326.

